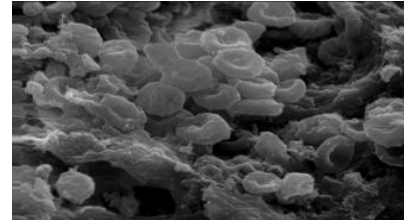




## atA-LUXEGOS-11T-Super Concentrate Antiscalant



### FEATURES AND ADVANTAGES

atA-LUXEGOS-11T is designed to inhibit inorganic scale formation in membrane separation processes.

atA-LUXEGOS-11T controls Calcium Carbonate, Calcium Sulfate, Barium and Strontium Sulfate, as well as Silica scales in waters with a high fouling potential.

atA-LUXEGOS-11T is environmentally compatible, especially where discharge of waste into the environment is a concern.

atA-LUXEGOS-11T has been approved for use by all major membrane manufacturers.

### TYPICAL PROPERTIES

Appearance	Clear to pale Yellow Liquid
Stability	Excellent
Solubility	Completely Soluble
pH(Undiluted)	≤2
Specific Gravity	1.20±0.03(g/cm <sup>3</sup> )

### SAFETY AND HANDLING

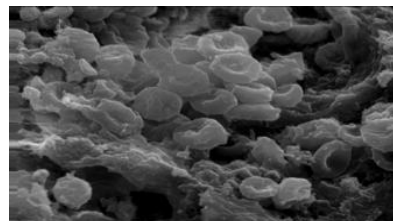
In accordance with good safety practice, handle with care and avoid contact with eyes and prolonged contact with skin. Always wash hands thoroughly after handling. For more information see the Safety Data Sheet provided with this product.

### CHEMICAL FEEDING AND CONTROL

atA-LUXEGOS-11T may be diluted up to 11 times prior to dosing. For best results, it is preferable to use dechlorinated permeate quality water for dilution. atA-LUXEGOS-11T is normally fed continuously prior to the final cartridge filter. The dosage of atA-LUXEGOS-11T required to inhibit scale formation will be determined by antiscalant projections that will be provided by atA.

### PACKAGING

atA-LUXEGOS-11T is packaged in 25 KG non-returnable plastic drums.



## ata-LUXEGOS-11T-反渗透 11 倍浓缩液膜阻垢剂

### 产品特点和优势

ata-LUXEGOS-11T 是一种超级浓缩的阻垢剂，浓缩倍数为 11 倍（按重量计）。

ata-LUXEGOS-11T 是为防止膜分离过程中的无机盐结垢而开发的产品。

ata-LUXEGOS-11T 在原水具有较高结垢倾向时，仍可有效防止碳酸钙、硫酸钙、硫酸钡、硫酸锶和硅结垢。

ata-LUXEGOS-11T 是一种环境友好型阻垢剂，尤其适用于环境要求较高的场合。

ata-LUXEGOS-11T 获得了各大膜生产厂商的认可。

### 主要参数

外观	透明或淡黄色液体
稳定性	极稳定
溶解性	能与水完全融合
pH (未稀释时)	≤2.00
相对密度	1.20±0.03(g/cm <sup>3</sup> )

### 操作安全

遵守安全措施，小心搬运，避免接触眼睛，避免长期接触或频繁接触皮肤。每次操作后需彻底洗手。其它资料详见随货提供的化学品安全说明书（MSDS）。

### 药剂投加及控制

ata-LUXEGOS-11T 可以稀释 11 倍后投加，药剂获得最佳效果，宜使用反渗透产水来稀释。ata-LUXEGOS-11T 通常连续投加于保安过滤器之前。ata-LUXEGOS-11T 的药剂投加量由澳大利亚未池有限公司（ata）经实验模拟确定。

### 包装方式

ata-LUXEGOS-11T 以 25 公斤不可返还塑料桶包装。